



# Accessing MTG Data for African Users

Erdem ERDI  
*Data Services User Support Officer,*  
*EUMETSAT*

*Online Webinar / 12.05.2026*



## **EUMETSAT Data Access Services**

Portfolio overview

## **Push Data Services**

EUMETCast Africa and Terrestrial

## **Online Data Services**

EUMETView, Data Store, Data Tailor

## **Summary**

# EUMETSAT Data Access Services

[www.eumetsat.int](http://www.eumetsat.int)

## Push services



**EUMETCast Terrestrial**  
Near-real-time data delivery  
via terrestrial networks



**EUMETCast Satellite**

## Pull services



**EUMETView**  
Viewing your data



**EUMETSAT  
Data Store**  
Improving data access



**Data Tailor**  
Customising your data



**Data Centre**



**WEkEO**



**Direct dissemination**

## Shared services



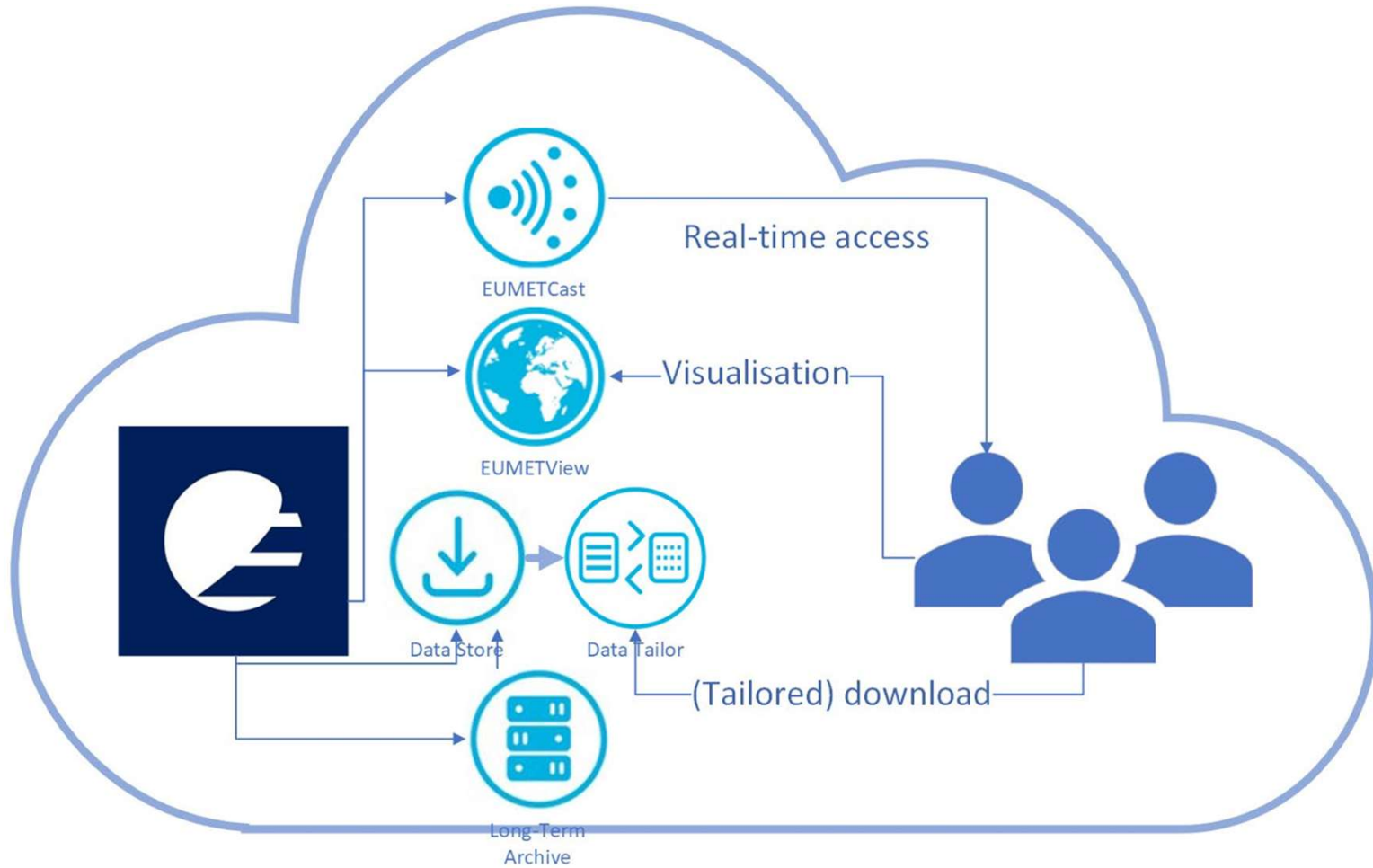
**European  
Weather Cloud**  
Hosted data processing



**WIS**



# EUMETSAT Data Access Services

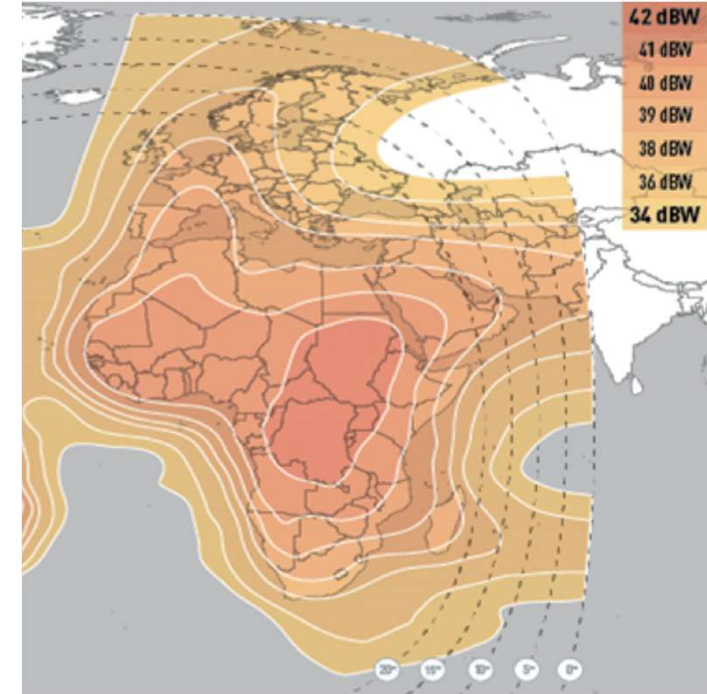




# EUMETCast Africa

[www.eumetsat.int](http://www.eumetsat.int)

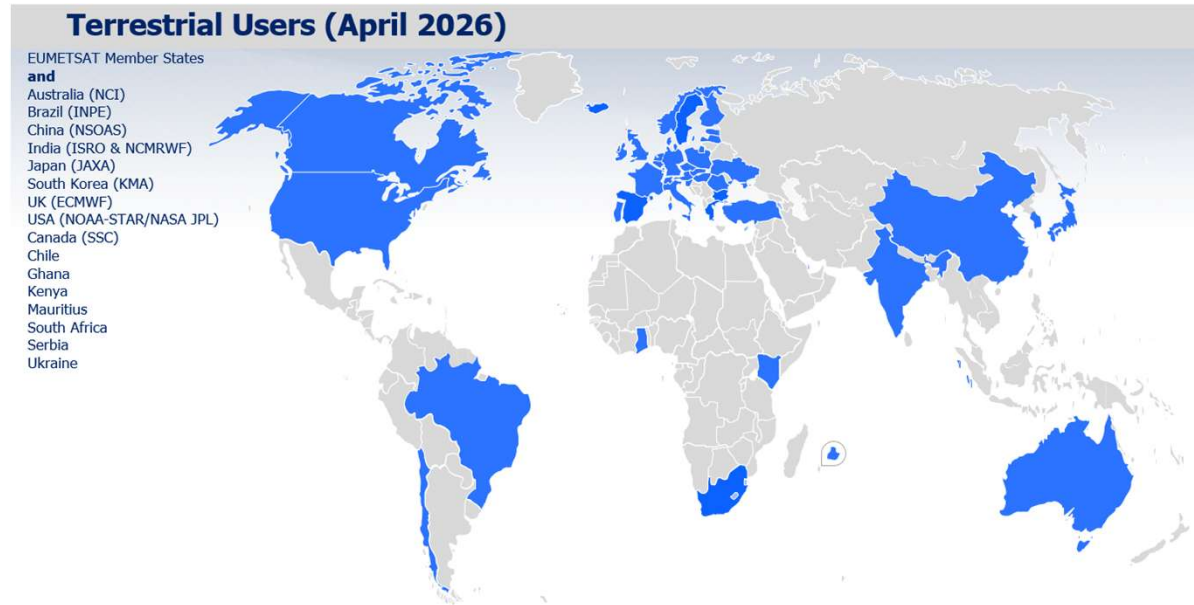
- 2.4 - 3.6 meter antenna
- DVB-S2 receiver
- **Very high availability**
- **Very low latency**
- Customised FCI L1c and L2 data
- Uncustomised LI L2 data
- Customisations are subject to evolutions and improvements



C-band downlink coverage of the EUMETcast Africa Service and a sample antenna

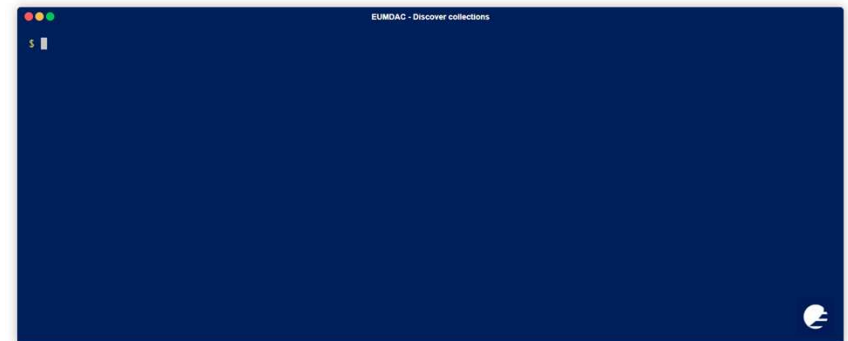
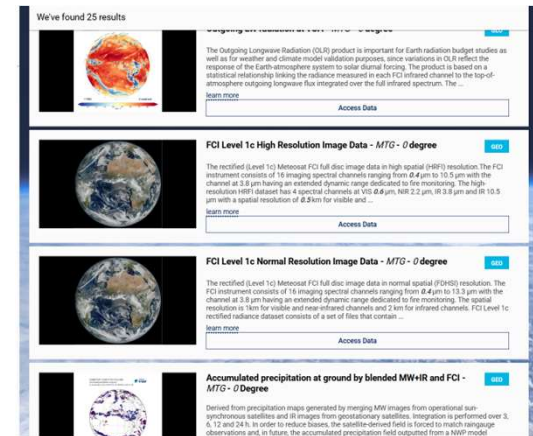


- Connectivity with NREN or a stable internet connection, with enough bandwidth available
- **Very high availability**
- **Very low latency**
- **Full** MTG-I FCI and LI data
- Includes **MTG-S**
- No outdoors equipment





- Pull data which you need and when you need it (online)
- High availability (>95%)
- Low latency (<15 minutes)
- **Full** MTG-I FCI and LI data
- Includes **MTG-S**
- **Easy to use** WebUI and command line EUMDAC tool, which can also automate the downloads

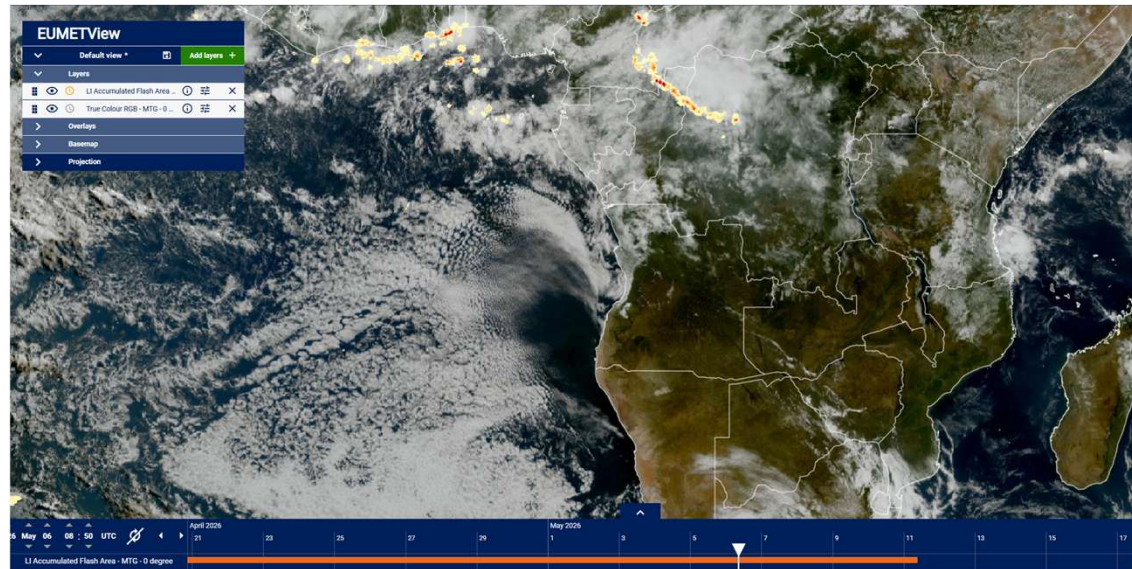


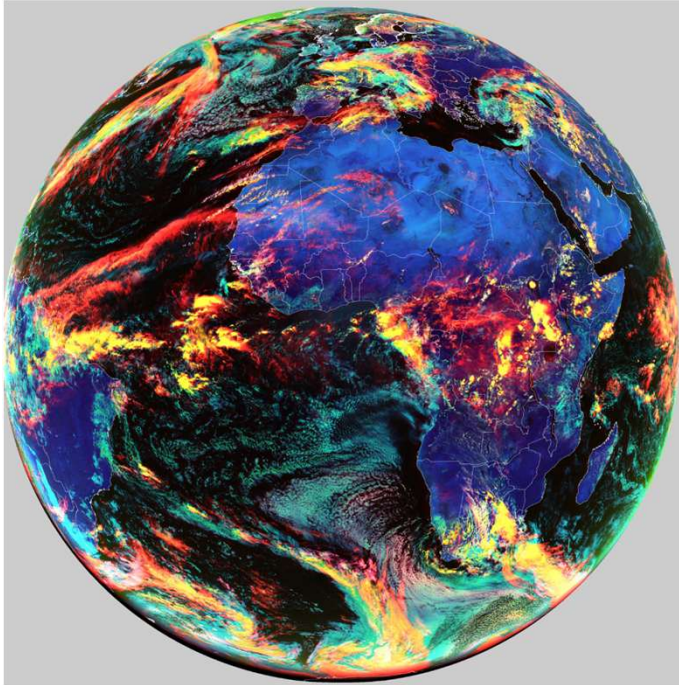


- Data Tailor can customise data **before being downloaded** via Data Store
- Data Tailor can also be installed locally to customise data **after download** via EUMETCast or Data Store
- **EUMDAC** can also call Data Tailor to automate the process
- Wide range of customisations:
  - Format change
  - Projection change
  - ROI extraction
  - ...



- Visualise or download imagery which you need and when you need it (online)
- High availability (>95%)
- Low latency (<15 minutes)
- Expanding list of MTG-I FCI and LI imagery
- **Easy to use** WebUI and API, which can also automate the imagery downloads





Example:

The MTG FCI Cloud Type RGB can be downloaded in GEOS projection in every 10 minutes automatically, by using fixed URLs, via either of the following fixed commands

`curl -X GET`

```
"https://view.eumetsat.int/geoserver/wms?service=WMS&version=1.3.0&request=GetMap&layers=mtg_fd:rgb_cloudtype,backgrounds:ne_10m_coastline,backgrounds:ne_bou  
ndary_lines_land&bbox=-6500000,-6500000,6500000,6500000&width=3600&height=3600&srs=AUTO:97004,9001,0,0&styles=&format=image/jpeg&bgcolor=0xCCCCCC" --  
output "filename.jpeg"
```

`wget -P /path/to/your/folder -O filename.jpeg`

```
"https://view.eumetsat.int/geoserver/wms?service=WMS&version=1.3.0&request=GetMap&layers=mtg_fd:rgb_cloudtype,backgrounds:ne_10m_coastline,backgrounds:ne_bou  
ndary_lines_land&bbox=-6500000,-6500000,6500000,6500000&width=3600&height=3600&srs=AUTO:97004,9001,0,0&styles=&format=image/jpeg&bgcolor=0xCCCCCC"
```



## Conclusions

- There are multiple ways of accessing MTG data and other satellite data from EUMETSAT data access services
- Various data services accommodate different needs and complement each other
- For details or questions, please
  - visit the **User Portal** (<https://user.eumetsat.int>) or
  - contact our **User Service Helpdesk** ([ops@eumetsat.int](mailto:ops@eumetsat.int))



**Thank you!**  
Questions are welcome.